



CONTINUOUS

OTO BAR

Machine for **cleaning/pickling/tin/silver/zinc chrome plating of tubes and bars copper, brass, aluminium, stainless steel**

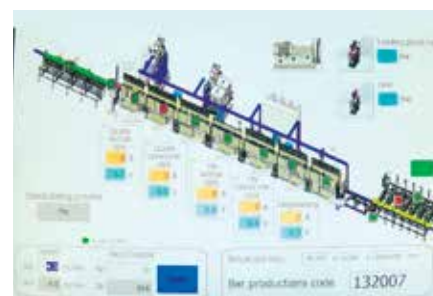


Tin and silver plating of copper bus bar

- » 3x20x2000 mm up to 15x200x6000 mm
- » each piece loaded, pulled, plated, unloaded with automatic process and quality control
- » high productivity



Loading unloading



» control



OTO BAR mod MLTP

Same machine can either plate:

- » Round and rectangular bars of 2 up to 6 meters
- » Threaded bars M6 up to M30
- » Flat Copper , Brass , Steel strip from coils up to 2 Tons and take up on precision layer spooler

< Plating

^
Rinsing



- » rectangular silver plated
- » punched bus bars
- » threaded bars zinc plated
- » bus bar tin plated



- » OTO BAR for STEEL
round bars and tubes up to 100 mm for Zinc NiZ Alloy,
Chrome, Phosphating
- » Threaded Bars
for bright zinc, tin

- » set up at front of bar drawing and shearing line, inlet speed up to 60 mt/ min, diameter 8 mm up to 50 mm bar-tube
- » round, squared, exagonal profiles , all stainless steel frame, heavy duty
- » electro cleaning, brushing, rinsing, wiper and air-dryer at the out let



//////
phone int. +39 0341 660246-7-8
fax int. +39 0341 660249
www.otomec.it
E-mail: info@otomec.it